



Building & Construction Review

ISSUE 407
MAY 2024

0121 824 4743 | buildings@bestpracticeuk.co.uk
www.bcr.uk

Search for us on LinkedIn and follow us on Twitter [bcr_uk](https://twitter.com/bcr_uk)



Solent Streetworks Consultants
Page 3



Pandor
Pages 4-5



Wallbed Systems
Pages 6-7



Superior Signs
Pages 12-13

Nationwide Louvre Company



Nationwide Louvre Company manufactures high quality aluminium Louvres, Louvred Doors, Louvred Plant Screens, Acoustic Louvres, Acoustic Screening, Aluminium & Timber Brise Soleil/Solar Shading.

Nationwide Louvre Company offers a full supply and installation service to its customers throughout the UK and have completed a number of projects in the Channel Isles and Europe. The business installs bespoke made to measure quality products on residential, commercial and construction projects.

Nationwide Louvre Company specialise in Brise Soleil and louvred plant screening. Brise Soleil projects are supported with computer simulation software to assess the effectiveness of our products in reducing the effects of solar gain on buildings.

Brise Soleil not only enhances the appearance of a building but will provide a much better living or working environment for the building's



occupants, with the added benefit of reducing glare to help with computer work and will reduce the running costs of mechanical ventilation and air conditioning.

Our Screening Louvre Systems are used to hide roof mounted plant and equipment and are available in a range of blade shapes and sizes. Supplied in an enormous range of colours and finishes will screen unsightly equipment and enrich the building façade.

T 01922 457204
sales@nlc-louvres.co.uk
www.nlcontracts.co.uk

The beauty of 'old-school' joinery

If you're looking for 'old-school' traditional hand tool joinery, look no further than Bluerun Ltd. The Essex-based company prides itself on not using CNC machines, creating all drawings by hand and assembling everything in-house. The result is stunning finished products, lovingly completed to the highest standards.

The family-run business has been manufacturing bespoke joinery items for over thirty years to the commercial and domestic markets. Working in the style of artisan craftsmen, the team carry out all manner of projects in the conservation/heritage sectors, internal and external windows, gates, decks, doors, fitted furniture, pubs, offices through to more unusual customised designs like wendy houses or 10-metre-high oak hardwood trebuchets!

The advantage of running a family-run business is the meticulous attention to detail for each product

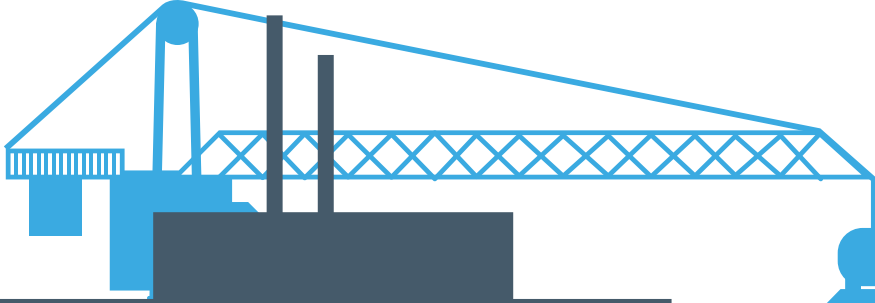


and with this customer-centric focus in mind, Bluerun is hoping to add a shop to the website. This will include items manufactured during the COVID Lockdown, when orders slowed down, such as mirrors, tables and clocks.

Across commercial or domestic joinery service, Bluerun is happy to take enquiries for all jobs, large or small. The company has manufactured replacement casements for listed buildings, where the existing glass needed to be re-used and side sliding sash windows for listed buildings.

With all eyes on the 2050 UK Government net zero targets, Bluerun has implemented its own sustainable best practices through installing LED lights throughout the workshop, in place of fluorescent lighting.

T 01799 599995
dee@bluerunltd.co.uk
www.bluerunltd.co.uk



CONTENTS

On the cover



Bluerun **1**



Pandor **4-5**



Wallbed Systems **6-7**



Steele **10-11**



Superior Signs **12-13**

Commitment To Excellence	3
Company of the Month	4-5
Commitment To Excellence Award	6-9
Commitment To Excellence	10-17
Building Products & Services	18-23
Landscaping & Outdoor Building	24-27
Furniture & Interiors	28-29



Hello & welcome to Issue 407 of BCR...

In this issue of Building & Construction Review, we bring you the latest and most up-to-date engineering and construction news, to help keep your building business ahead of the curve.

The UK's manufacturing sector has scaled up to eighth pole position in global rankings, signalling positive news throughout the industry, whereas the construction industry had admittedly gone through fits and starts but is now starting to see consecutive growth. In this bumper-packed May issue, we are proud to feature a stellar line-up of innovative companies from across the industry, all displaying commitment to excellence.



First up, Wallbed Systems Ltd on page 6 offers an ingenious range of beautiful wall bed hardware designs to furniture manufacturers and retailers, hardware distributors and retailers, hotel and hospitality contractors around the world.

From beds to doors, Pandor on page 4 is a market-leading manufacturer of customised doors and panelling across the UK to sectors such as commercial buildings, offices, hospitals, flats and more. Congratulations also to Pandor on its 10th Anniversary!

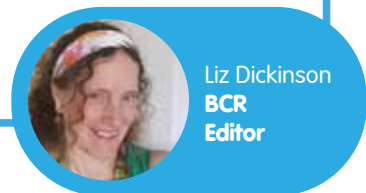
Multi-award-winning Shire Structures are a trusted consulting civil and structural engineering and specialist contracting company with a history spanning 26 years, bringing engineering innovation to the forefront. Congratulations to them also for being invited to join the Association of Specialist Underpinning Contractors (ASUC). Read more on page 14.

Steele is another award-winning company focused on structural steel fabrication. To date, Steele has worked on an astonishing 24,171 completed projects, with 9,977 happy customers and used a phenomenal 469,990 metres of fabricated steel. Check them out on page 10.

Other notable features include Solent Streetworks & Consultants Ltd (p3), Efendi Architectural (p8) and TileCentral UK (p17).

Don't forget to send us your latest construction updates and news.

Email us at: buildings@bestpracticeuk.co.uk



Liz Dickinson
BCR
Editor

Contacts

Publication Management

Sam Morton
Sales Manager
T 0121 824 4743
buildings@bestpracticeuk.co.uk

Production

Robert Sharp
Production Manager
production@businessandindustrytoday.co.uk

Accounts

Paul Whitaker
Accounts Manager
T 0121 824 4742
accounts@bestpracticeuk.co.uk

Editorial

Liz Dickinson
Editor
liz@freshmedia-uk.co.uk

Search for us on LinkedIn
and follow us on Twitter [bcr_uk](https://twitter.com/bcr_uk)



Leading NRSWA Street Works consultancy



In this issue of Building & Construction Review, we are delighted to select Solent Streetworks Consultants for our Commitment To Excellence.

With the Data Age demanding more gigabits per second, the current analogue phone system: Public Switched Telephone Network (PSTN) is on schedule to be fully replaced with fibre-based digital technology across the UK by the end of 2025. This will see a proportional increase in road works, whilst this necessary telecommunications upgrade takes place.

Motorways and all A-roads must be resurfaced every 10-12 years by law, as the combined impact of heavy traffic, heat, rain and air cause ongoing damage. And, in addition



to mandatory resurfacing, road works are also necessary for pothole repairs, white line and chevron painting and utility maintenance, repair and installation.

Solent Streetworks & Consultants Ltd is a New Roads and Street Works Act 1991 (NRSWA) Street Works consultancy, offering highways and traffic management solutions covering all of the UK mainland, including Wales and Scotland for all utilities services.

Based in Southampton, the company is gearing up for a busy two years of telecommunication road works, during the nationwide fibre roll-out. This is addition to existing work within the Roadworks, Highways and NRSWA Street Works industry, with all utility services. Working in partnership with utility contractors, Local Authorities and groundwork contractors, Solent Streetworks Consultants are universally trusted with its leading turnkey utility solutions.



Managing Director, Andrew Waight, said, "We work with all the utility services: water, energy (gas), power and telecommunications, adhering to the New Roads and Street Works Act 1991 (NRSWA) and Traffic Management Act 2004."

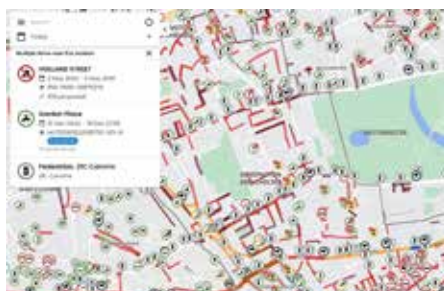
"We provide a 'turnkey' multi-utility back-office Street Works solution, along with the supply of Utility STATS/ Safe Digs and traffic management plans. We attend site meetings and carry out surveying work on the existing telecoms infrastructure."

Solent Streetworks Consultants work across three main areas:

- ▲ Street works planning
- ▲ Road works co-ordination
- ▲ Traffic management

Firstly, within street works planning, the dedicated team manage all the planning and project management for the planned dig-phase, in close conjunction with local highway authorities, utility companies and contractors. This includes intricate details, such as managing permits and verifying works comply with the all-important New Roads and Street Works Act 1991 (NRSWA) and the Traffic Management 2004.

Secondly, Solent Streetworks Consultants ensure highly-effective road works co-ordination, to get our roads moving as quickly as possible. Through targeted, proactive co-ordination, the team assist Local Authorities, utility companies and contractors across England with planned street and road works. All managing and co-ordinating of permits is carried out in a seamless, professional manner.



Thirdly, Solent Streetworks Consultants deploy traffic management solutions, also known as road traffic control logistics in a manner conducive to exemplary health and safety standards. The bespoke traffic management plans are engineered to comply with all local and highway authority legislation.

Andrew commented, "We are always striving to better ourselves and deliver the best possible services to our clients, along with furthering our knowledge of any changes to any legislation. Although we work on nationwide contracts, we also believe in supporting local businesses and as such, we are proud to declare our latest sponsorship portfolio: Southampton Football Club. We are also proud to announce that we recently secured numerous sponsorship deals with local non-league football teams – AFC Totton and Hedge End Town FC."

For more information, please see the details below:
T 023 8098 6303
enquiries@solentstreetworks.com
www.solentstreetworks.com



10th anniversary for leading door

It's once again a delight to showcase Pandor as our Bespoke Door & Panelling Company of the Month

Pandor is a market-leading manufacturer of customised doors and panelling across the UK to sectors such as commercial buildings, offices, hospitals, flats and more.

Pandor has production facilities in Sittingbourne, Kent and offices in London. Their state-of-the-art production facility benefits from the latest advancements in modern machinery such as their 5 Axis CNC Twin Bed Router, CNC Moulder, automated saw, heavy-duty sanding machine, veneer flow line press and first-class lipping and edge banding. This ensures the highest-quality manufacturing and finishing on all products.

Established in 2014 by founder Mike Hill, Pandor has enjoyed a robust growth plan over the last decade, specialising in exceptional customer service and high-spec products. Mike has considerable expertise in the fire door industry spanning over forty years and has taken the time to focus on customer-centric best practice as he explains further, "What I hope stands us apart from our competitors is our approachable, personable manner – we listen carefully to our customers' needs and adjust our manufacturing orders accordingly. We have many loyal customers, and they appreciate our quick delivery lead times, especially when larger manufacturing companies can take much, much longer to deliver orders.

"With this in mind, Pandor looks to provide clients with what they need, when they need rather than



dictating dates to them. This is greatly appreciated and further strengthens our already-strong customer base.

"We offer made-to-order client requirements for fire doors, decorative doors, frames and other associated items such as screens, shopfronts and windows, with a speciality in certified fire doors and door sets."

Fire doors are integral to optimised passive fire protection systems across industrial, commercial



and domestic buildings in the UK. Precision-designed to mitigate against the spread of fire, smoke and toxic gases from one area to another, fire doors allow occupants, whether residents or workers extra time to evacuate accordingly. A secondary factor is that compliant fire doors give firefighters more time to arrive at the scene of the fire and control the fire, before it spreads further. Using a system of compartmentalisation, with fire doors lined throughout in corridors or stairwells, can create fire-resistant barriers in a high-rise block and importantly help slow down the spread of fire and smoke.

Following the fire at Grenfell Tower, North Kensington where 72 residents tragically died, the subsequent Fire Safety (England) Regulations in 2022 came into effect on 23rd January 2023. With all eyes on optimised fire safety, Pandor can manufacture customised fire doors, in accordance with FD30, 60, 90 or 120 certifications. Full back up with certification gives Pandor's clients the reassurance that they need.

Fire doors are given FD ratings from 30, 60, 90 to 120, with FD30 being the most common choice. This typically gives 30 minutes fire safety protection, in the event of a fire.

Pandor's fire doors can be laminated, painted or decoratively veneered and acoustic doors can also be fire-rated.

and panel manufacturer: Pandor



"A recent complex job involved an 'oversized entrance door' set for a mansion. (over nine feet or 2,750mm tall and 2,450mm or eight feet wide.) The frame had to be made in one - meaning it was too big for our usual processes. Creative improvisation was needed to ensure we could achieve the size and of course transport it safely to site. Another instance was for a government project where the door sets had been overlooked. We managed to supply the job a day ahead of schedule and the customer was delighted.



"We take great pride in all our certified fire-safety ratings. We recently tested a glazed timber door set for two hours in a laboratory furnace, for fire integrity. It went beyond the required 120 minutes to over 140 minutes, which is a huge achievement for fire safety and gives all our customers added reassurance."

Across the industry, veneered panelling is not as popular as it used to be, with the current trend moving towards laminate and paint finishing instead. Our finishing shop has been upgraded to achieve the latest requirements.

All completed projects are archived in Cloud storage for future reference and Pandor offers full traceability on all company fire doors by fitting a fire plug. This allows surveyors later down the line to ascertain the supplier origin and come back to Pandor for prior measurements and details as required.



Mike admits that he is like a 'dog with a bone' when it comes to keeping on top of production dates and is proactive regarding any unexpected issues. Recently the company had some performance and reliability issues with an in-house key machine and Mike could foresee ongoing difficulties. Without delay, he ordered the latest model to ensure accuracy and punctual production times going forward. Now it is installed he is confident that accuracy and quality is assured.

Pandor supplies mainly to London and the Home Counties due to the transportation proximity to its manufacturing facility but can supply all over the UK.

With regards to sustainability best practice, Pandor can use Forest Stewardship Council (FSC) certified softwoods and hardwoods from sustainable sources on request, with full traceability for our customers wherever required and further use water-based finishing products in the interests of the environment.

"Looking ahead to the future, Pandor has already been working hard to enlarge the range and scope of what it can manufacture and certify.

"We are always looking to enhance our in-house technical capabilities, pushing the boundaries on what we can make.

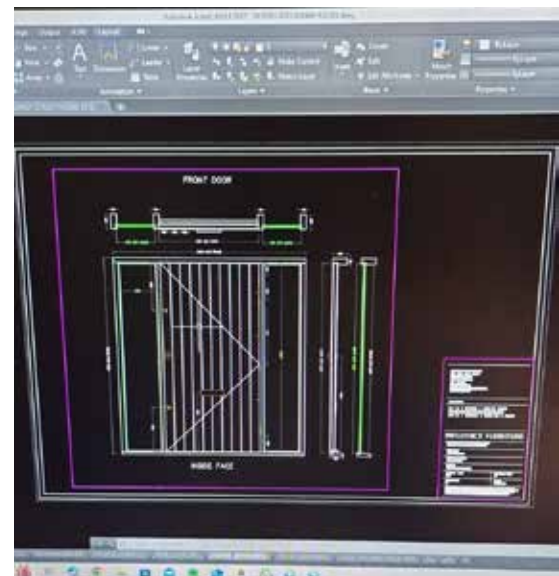
"We have invested in only the best machinery



in the market. This allows us to maintain our market-leading position, with premium quality manufacturing. Our mantra is the three Q's: quality, quality and quality every time."

Here at Building & Construction Review, we would like to wish Pandor a Happy 10th Anniversary this year and look forward to seeing how the company evolves over the next ten years.

To find out more about Pandor's full range, see the website below:
T 0208 2797611
M 07909 530007
mike@pandor.ltd
http://pandor.ltd



WBS: Let's build a v



Wallbed Systems Ltd (WBS) is a London-based global business offering an exclusive range of beautiful wall bed hardware designs to furniture manufacturers and retailers, hardware distributors and retailers, hotel and hospitality contractors around the world.

Taking inspiration from the original models, which originated in the USA in the early 20th century, Wallbed Systems Ltd (WBS) has been manufacturing in-house spring balance systems over a 20 year period, allowing for precise tension adjustments and easy lifting, so there is no compromise on comfort or convenience.



Malaysia show apartment in new development

We are delighted to welcome back Wallbed Systems Ltd for our Commitment to Excellence Award

Behold the Alpha bed

The Alpha bed system is the most popular product globally, available in standard and special sizes, vertical and horizontal mounting, with a choice of leg options and even a desk. The lightweight design comes with robust steel bed frames, with strengthened steel stiffeners for a strong platform. Alpha bed frames are available in single, double, queen or king sizes and come with the adjustable SBLM, allowing perfect balance and easy, safe 'finger-tip' operation every time.

Hallmarks of WBS design

All WBS wall beds are easy to install and fit full height mattresses up to 300mm, meaning there is no compromise on an excellent night's sleep. The full wall bed design includes the bed counterbalance mechanism (SBLM), bed frame rails, mountings, pivot system, springs and fasteners. The powder-coated parts are ergonomic and durable, offering assured longevity. Even more remarkable is the 'finger-tip' control mechanism with minimal effort to open and close each bed.

NeXT bed

The latest designs hot off the press include the NeXT bed which give an immediate, ready-to-use solution with or without cabinet, and which still delivers comfort levels indistinguishable from a conventional bed. All products are stocked at multiple locations globally with advice provided around options and sizes.

The beginning: Asian furniture bedding influences for US market

During his previous time in China and Hong Kong working in engineering, then later furniture and bedding 20 years ago, Managing Director, Jeremy Waller, soon saw opportunities for sensible designs of reliable, safe and flexible wall beds,



Second guest room in Malaysia apartment – shows desk stowed under bed



Production of parts using laser cutting

which could feature comfortable mattresses. Once back in the UK, this engineering/bedding combined expertise led Jeremy to helping US clients (where wall beds have been popular for decades) source directly from China.

With Jeremy's help, the US clients started thinking more in global terms, "That is how WBS started and we continue to manage the supply chain, as well as building the non-North American business. We now distribute in over 20 countries.

"We specialise in creating and manufacturing the complete hardware needed to make any sort – size – shape of wall bed, and latterly have extended this to accessory components."

Library bookcase design for our NeXT bed



wall bed together



Show apartment in Bangalore, India – children's room

"There is considerable power in a wall bed, so we chose to use our own 'spring system' which we developed and this has become something of an industry standard. We realised over the last couple of years, that we could license this 'know how' – we are now doing this to broaden our supply chain and be more local in many markets we work in. This is now underway and is one of the more radical parts of our strategy for gaining overseas markets," added Jeremy.

Lockdown gave design breathing space

The COVID-19 pandemic was a litmus-test for many businesses and luckily for WBS, with

everybody working at home and short on space, demand was high as Jeremy Waller explains, "Fortunately, we had inventory, the factory was open ahead of UK shutdown as Asia's COVID emerged faster, and we ordered increased production based on what we felt the trend was and what underpinned it. It led to record years of growth and sales globally and taught me a lot about change and being prepared.

"Our sleeping solution works equally well in home office environments, small bedrooms, through to student accommodation, micro-apartments and hotel rooms, providing an excellent hybrid living, working, studying and sleeping area, fully maximising the space available."

The Pandemic gave pause for reflection and allowed WBS the creative thinking time to develop a truly 'democratic' wall bed: one that everyone knows and can afford. After a design period, the company came up with the idea of a free-standing bed, with or without a cabinet. This idea has now been brought to market after positive feasibility with cabinet partners: new lightweight but robust cabinets which will further develop this idea.

Nitty gritty of design functionality

Robust wall beds have moving parts that need the correct combination of wear resistance and strength, so WBS make sure they address this with testing and the right processes. The key part of the system is always the correct lift mechanism: the large loads involved in lifting a wall bed. WBS's objective is to ensure the bed will lift with minimal effort, 'finger-tip' effort in fact.

The trademark spring design was not easy to make and was a real labour of love for the team but after now producing somewhere in the region of 1.5 million springs, the proof is in the pudding.

"Most springs are still performing in their original product. Occasionally we are asked to replace a spring which has worn, but it is really rare. Clients like the fact they can replace all parts if needed, even after 15 years."

Commitment to Excellence: moving with the times – the magic of lasers

With Jeremy's traditional engineering background,



Alpha panel bed with additional storage units



Typical inventory at warehouse

it has been a revelation seeing the advent of processes such as CNC laser cutting, in the place of press tools and CNC formed parts. CNC machinery has enabled batch size reductions and created a new level of flexibility at unprecedented levels.

"This is then, the next transformation of industry, which has driven the cabinet sector. More than ever, we have to embrace these new methods and advantageously, we find ourselves able to respond to special sizes, small runs, and even special finishes."

Exceptional distributor customer service and delivery times

WBS has had a longstanding relationship with a UK distributor, Hideaway from the start, who provide exceptional customer service and advice. With high stock levels across many other locations, including Asia, there is always enough for container order completions from inventory, "This is a much higher investment than companies usually make. I also try and understand our suppliers' challenges and anticipate issues based on experience we have. Most suppliers have been with us for many years, as have our customers, fortunately. We work with talented engineers and look for people who know their machinery, materials, and are enthusiastic. Most seem to be like us, family companies often second-generation with a legacy and massive enthusiasm and persistence."



For more information on the full product range and cabinet designs:
 T +44 (0)208 704 5796
 M +44 (0)7780 661958
jeremy.waller@wallbedsystems.co.uk
www.wallbedsystems.co.uk

Efendi Architectural: A new focus on construction and manufacturing marketing



In this issue of Building & Construction Review, we are delighted to select Efendi Architectural for our Commitment to Excellence Award.

Having the right marketing approach in construction and manufacturing is essential, not only does it help seal a firm reputation with existing clients but it helps attract new ones. Gone are the days of 'word of mouth' – it is now vital to have a robust digital presence; from an eye-catching website, to engaging LinkedIn content.

Many construction companies now employ Social Media Engagement Officers alongside Marketing Officers to keep the posts flowing on social media platforms, which now also include Tik Tok and YouTube.

However, it is not enough to simply post updates,

content must always be meaningful to help beat the algorithm gremlins and even what time you post during the work day can make a huge difference to optimal engagement. Time lapse videos are popular as they can showcase the progress of a building project, alongside bite-sized positive client reviews, trade show engagement, to highlighting a new service or product with high-resolution images and specifications.

Strong branding fosters an edge in the construction industry, keeping you ahead of competitors and more importantly, helps cultivate a reputation built on integrity, professionalism and trustworthiness.

Here at Building & Construction Review, we have been impressed by the eclectic portfolio and knowledge-based professionalism of Efendi Architectural.

The owner, Leo Collier-Bett established the company in 2017 after an extensive background in graphic design, desk-top-publishing, print marketing, marketing strategy, film & video production both here in the UK and abroad. After gaining a degree in Digital Media Design, he quickly co-founded a web-design business with other graduates and then went on to publish magazines for airport lounges, print production for independent financial services and even picked up a Pacific Asian Travel Award for video work in the luxury hotel and resort sector. The tourism sector then evolved and many companies starting using in-house digital marketing rather than using external consultants and gradually Leo started specialising in work for UK manufacturing and construction.

Efendi Architectural has been the culmination of an extensive background across print and digital marketing and within the construction/ manufacturing industry in particular, Leo brings expertise to a relatively niche marketing area.

"For decades across the construction and manufacturing sectors, marketing was always on the backburner. It didn't feel important for many companies as the priority was 'getting the job done.' That has all changed recently and if you don't have an online presence, you are in danger of being left behind. Companies need to now deliver the goods, comply with all legislation and look to be improving their corporate social responsibility."

In a post-Grenfell sector, all eyes (rightly so) are on the current legislation and making the industry safer, especially in regards to building regulations and fire safety in high-rise residential buildings. Dame Judith Hackitt published her final independent review in 2018, which called for a radical 'universal shift' in culture from clearer guidelines, more robust paperwork and product labelling, through to reasserting the voices of local residents.

In my job role, I have followed all the movements since The Hackitt Report and am fully aware that this is a landmark shift in the construction and manufacturing sector. Throughout my background in the sector, I have picked up considerable knowledge of the inside workings of facades for example, which gives me a distinct advantage. This allows me to approach all aspects of my work with technical, contextual





have worked closely with Istock PLC, specifically Istock Futures, a new division focusing on growing MMC throughout the UK construction industry. With an extensive depth of knowledge in the facade space, Efendi Architectural have provided ongoing visual & digital content creation support along with input on a wider marketing strategy to help shape the brand identity, grow brand exposure and support the divisional commercial drive.

"It has been fantastic to be involved in the Futures project with Istock, really exciting to be part of the promotion of MMC within the UK and impressive to see a giant of traditional UK manufacturing and construction, with such prominent position and heritage, looking ahead with the aim of improving sustainability and efficiency within the space. We are proud to have been a part of this journey for the last 18 months and look forward to a longstanding strategic partnership," commented Leo.

Building & Construction Review has earmarked Efendi Architectural as 'one to watch' due to the hybrid approach that Leo employs: technical knowledge of the construction and manufacturing sector, combined with a creative flair for visual and digital marketing.

"We use high spec DSLR and mirrorless cameras, which allows for a dynamic range of aspects and visual styles. If a company wants a video time lapse of a project over a year, we can install a static-fix camera, which gives wonderful, transformative imagery over that time.

"On a purely creative front, dusk and night-photography of urban architecture can be stunning- think the last dying embers of the sunset reflected in the background, offering a beautiful juxtaposition with contemporary building design or the haunting blues and blacks of the night sky setting on a semi-deserted urban setting, it can look really striking for marketing purposes," added Leo.

The best strategic marketing isn't about bombarding clients with hard sales, illuminating content marketing can instead create more engagement and thought-provoking discussions through carefully crafted infographics, video tours, interviews, through to short and long-read articles. Efendi Architectural understand the digital dynamics of SEOs, website and social media analytics, so it doesn't have to be like practising the dark arts.

If you're looking to futureproof your construction or manufacturing branding, revamp your photography or website or need to 'think outside the box' on your marketing campaign, contact Efendi Architectural to start your new approach today.

M +44 (0)7587 054663
info@efendiarchitectural.com
www.efendiarchitectural.com



knowledge, which then enhances creativity, whether written or in visual format.

We can offer a full range of holistic outsource marketing services from construction/manufacturing film and photography, construction time lapse videos, complete or staged project coverage, LinkedIn promotional packages, aerial film and photography, through to brochure, flyers, catalogues in print or digital formats and any other bespoke requests.

With some companies over a period of time, we can offer R&D, consultancy, training through to technical presentations.

"The most popular request currently is for social media content and this can work in a multi-purpose approach. High-quality content (whether visual or written) can be modified across social media platforms, website news updates, HR editorials, case-studies through to technical presentations," explained Leo.

Over the last 18 months, Efendi Architectural

Trust Steelo: When pe

In this issue of **Building & Construction Review**, we are delighted to select **Steelo Ltd** for demonstrating **Commitment to Excellence** across the **structural steel fabricator industry**



Award-winning Steelo is a structural steel fabricator company and was recently listed in the Top UK 15 Fabrication Companies 2024, announced by manufacturing software company EZIL. In 2022, 2023, and 2024, Steelo was also named the winner of the Best Structural Steel Fabricator in London at BUILD's 7th annual Construction and Engineering Awards. The award was judged by an independent panel of industry experts.

These accolades and industry recognition illustrate the prowess and expertise that Steelo

has provided the London area with over the last fifteen years. Established in 2009, Steelo has grown exponentially from humble beginnings. Starting as a small industrial unit in Middlesex, the company had a manual production line until the gradual introduction of cutting machines in 2015. The rest as they say, is history.

"We now have two 12,000ft² fabrication plants in West London, near Heathrow and thrive on innovation. Change is the only constant and we have happily adapted to new technology along the way, helping carve our identity as a powerhouse in the structural steel fabrication sector. We take pride in delivering flawless results for every project of our customers. Our entire team, from sales to design, production, and logistics, shares our core values. We strive to offer the London market an unmatched service.," explained Arek Szurczak, Managing Director.

Steelo has a loyal customer base and typically receives glowing five-star testimonials on Trustpilot such as these: "Difficult project with visible steel. Steelo assisted from day one, with extensive back and forth between Architects, SE and ourselves, provided us with great knowledge, spot on design and quick delivery



on time."
"Great personnel from sales through design up to delivery driver, all always happy to help."
"Best fabricators by far!"

With a customer-centric approach, Steelo is renowned for gold-standard project management throughout, with each project executed to the highest standard and on time.

"If there are any unexpected alterations to the project, we will promptly notify you and provide guidance on any necessary amendments. Our commitment to transparency means we operate with full openness towards our customers," said Gabi Kwasna, Sales Team Leader.

Steelo indeed goes beyond meeting project deadlines and will provide steel and fabrication services to exact specifications. "At Steelo, we're dedicated to precision, reliability, and efficiency in every project. We deliver tailored solutions promptly, within budget, and without compromising quality. With transparent pricing and regular updates, we ensure smooth project management. Trusted by our customers,



Peace of mind matters



we guarantee expert advice and top-quality fabrication, every time," added Arek.

Steele offers bespoke elements and structures such as box frames, cranks to goal posts and apex structures to end customers. It caters for small residential projects as well as larger developments with an aid of streamlined project management from initial enquiry to site erection.

Steele also engages in modular production for leading construction companies, supporting the government's housing initiatives. With innovative production line optimisation introduced by



Hubert Kalota, Modular Project Manager, they efficiently handle substantial workloads within tight deadlines.

A great example of Steele's Commitment to Excellence is a galvanising project for a Kent-based swimming pool, as part of a residential property in Bromley named 'Woodlands'. Working in tandem with contractual builders and architects, Steele provided 68 fabricated galvanised steel beams. The beams were protected with a hot dip galvanised finish, to protect from erosion and rust and had a astonishing collective tonnage weight of 5,295kg.

Steele has overseen fabrication of a wide range of products for large projects over the years including: Highworth Grammar School, King Richard School, Kent Science Park and Cornerstone Car Park, with case study photos provided on the company website.

As part of Steele's modular branch, their components have contributed to the construction of several new housing developments in London and Dublin, such as Camden Goods Yard, Sandyford, London Dock, White City M&S, and Chelsea Creek.

To date, Steele has worked on an astonishing 24,171 completed projects, with 9,977 happy customers and used a phenomenal 469,990 metres of fabricated steel.

"In the near future, we aim to continuously enhance our current operations while also branching out into various market sectors that rely on structural steel. Historically, our primary emphasis has been on residential projects, particularly conventional lofts and extensions. However, we now aspire to further extend our



reach into commercial, public, and modular sectors," explained Arek.

Here at Building & Construction review, we have been mightily impressed by the professionalism and meticulous attention to detail displayed by Steele's fabrication services. The helpful blog on their website explores pertinent issues such as surface preparation in welding and how steel stands strong in cold weather, offering valuable industry insights.

To find out more about more about this award-winning company, ranked one of the top 15 Fabrication Companies in the UK today, see the details below:
T 020 8569 8144
sales@steele.co.uk
www.steele.co.uk



Signs for a brighter



"We pride ourselves on giving the same professional service whether it's a small internal sign or a large external 3D sign, from start to finish. We design, manufacture and install high quality signage across the North West for every type of business and industry, including the manufacturing and fitting of largescale signs for shops, factories, schools, construction sites and many more.



"Our main role is wide format printers, however we provide all types of signs,

Clear signage is an integral part of our everyday lives: from office fire exit signs, safety instructions on construction sites, to local cafe lunch pavement signs. If done correctly, these signs offer important reminders about health & safety, visual directional instructions in car parks, through to advertising for a new business.

including specialising in safety signs & products for the building, maintenance & construction industry.

It is imperative for example, that safety signs and posters comply with the Health & Safety Regulations 1996 or education signage is inclusive and dyslexic-friendly, under the Equality Act 2010.

"We supply safety signs and safety products to the whole of the UK through our online safety shop: Signs2Safety.

Superior Signs is a family-run business based in Bury, Lancashire and has been providing a professional signage business for fifty years. Established in 1973 by owner Geoffrey Wm Buckley, the company has offered a wide range of safety to a wide range of industries across Lancashire, Greater Manchester, Merseyside, West Yorkshire and Cheshire. These industries include: retail, leisure and food, healthcare and social care, construction and trade, councils and charities, education and SEN and professional services.

"Over the last fifty years, we have worked with



a wide range of customers and pride ourselves on our customer-centric philosophy. We go the extra mile by offering customisation with customers' logos and brand images. We have received glowing five-star Google reviews from delighted private and industrial customers are looking forward to expanding further with new customers, looking for premium quality signage," explained Geoffrey.

After a few turbulent years, following the COVID pandemic, the construction industry is expected to grow by 12% compared to previous years, according to construction recruitment specialists: ITS Building People. There is expected to be a steady growth in the social housing sector and the education sector especially, with hundreds of school set to be rebuilt over the next ten years. Following funding from the Department of Education, major refurbishment will be carried out in over 800 academies, colleges and schools.



Signage on construction sites needs to adhere to Health & Safety Regulations 1996 and Superior Signs can provide a portfolio of sign production, hi-vis jackets, hard hats (with or without branding), construction road signs, traffic cones, vehicle chevron markings (including compliant Chapter 8 kits) plus a range of essential safety items. With a one-stop solution approach, Superior Signs can even offer promotional materials for tradespeople such as business cards, uniform embroidery, vehicle graphics, budget leaflets and A boards.



er future



Here's a snapshot of what Superior Signs can offer the construction industry through Signs2Safety:

- ▲ **Budget construction site signs** – made in 4mm correx, signs include warning site entrance, CCTV in operation, guard dogs, fire assembly point, no smoking, safety helmets and much more.
- ▲ **Construction Site Signs** – this includes road and site signs to ensure public and worker safety such as: no public access, road closed and caution vehicle reversing signs.
- ▲ **Safety boots** – a wide range from Himalayan trainers to safety boots
- ▲ **Hi-vis clothing** – a wide range of hi-vis jackets, vests, waistcoats, bomber jackets and much more.

With compliance essential across construction sites, Superior Signs offers advice on the latest legislation, alongside its extensive product range and can offer bulk discounts to industry.



With the focus on major building refurbishment across the education sector, Superior Signs can offer a wide range of professional, premium signage to educational institutions, including the following:

- ▲ **directional and wayfinding signage** – helping to orient staff, students and visitors
- ▲ **exterior signage** – school or college names
- ▲ **post and panel signs** – for large-scale campuses such as universities
- ▲ **pavement signs** – including safety signs to slow down outside schools
- ▲ **interior and window-based signage** – to personalise core learning values, to make learning environments fun, safe and inclusive.



Educational institutions are the cornerstone of the next generation and help students develop potential across chosen areas of study. With a greater understanding of many neurotypical and SEN conditions such as autism, ADHD, dyslexia and dyspraxia, it is now expected for learning environments to have signage depicting kindness, respect and tolerance, anti-bullying behaviour in dyslexic-friendly fonts and clear visual signage for all, including those with sight impairments. With an emphasis on inclusivity for all, the team at Superior Signs can offer a full consultation on the full range of signage options.

Finally, with the rate of inflation expected to fall during 2024, this is good news for the retail market with sales volumes expected to grow after a sluggish couple of years. According to the publication: Retail Gazette, the food retail sector in particular should see a welcome 5% growth from 2023. With the circular economy now impacting fast fashion, preloved and second-hand clothing companies are big business, especially among Generation Z. These offer prime opportunities for existing food retailers to upgrade external shop front signage, through to emerging new businesses to capitalise on eye-catching window graphics.

Window graphics are a unique, fun way to mark short-term seasonal events such as Christmas, Valentine's Day or Mother's Day and are proving popular with independent cafes, florists through to bookshops and hairdressers across the country. The visual artistry is perfect for Instagram marketing, providing flair and quirky creativity and is exceptionally cost-effective. Superior signs has considerable expertise with glass and window graphics and can provide promotional imagery, branding through to frosting for the building trade.

If you're looking for clear signage from a family-business with fifty years' industry experience, Superior Signs offers a professional service for all businesses, small to large and across all industries, including bespoke requests.

For more information, including examples of previous projects, see the details and website below:
T 0161764 5108
sales@superiorsigns.co.uk
<https://superiorsigns.co.uk>
www.signs2safety.co.uk

Award-winning Engineer

Shire Structures

Multi-award-winning Shire Structures are a trusted Consulting Civil and Structural Engineering and Specialist Contracting Company with a history spanning 26 years, bringing Engineering Innovation to the forefront.

Billed as 'Thinking Engineers' - they work across private, commercial and public sectors. With a forward-thinking approach, Shire now completes projects in the following areas:

- ▲ Civil and Structural Engineering
- ▲ Telecommunications Design services
- ▲ Geotechnical investigations
- ▲ Structural repair services (underpinning, mini-piling, jacking, root barriers and resin injection)
- ▲ Insurance Perils repairs/services
- ▲ QuickBase Foundations

"We Consult, Design and Construct on the more complex projects, that others won't touch in addition to standard stabilisation projects where our extensive expertise enables us to be ahead of the game," explained Head of Operations, Matthew Newis

Consultancy View

With buildings that have suffered from Structural Movement our approach is based on the requirements of the Institute of Structural Engineers Publication 'Subsidence' published in November 2023 to which Shire were involved in the rewriting of this document.

Our Approach:

- ▲ Visually Inspect
- ▲ Determine if the reported structural issues are historic or progressive
- ▲ Investigate to determine the 'cause'
- ▲ Eliminate the 'cause'
- ▲ Stabilise/Repair if the 'cause' cannot be removed

Design Approach

All our design/construction methods are reviewed and checked to ensure that they provide the minimum impact to the environment, with an

In this issue of **Building & Construction Review**, we are delighted to showcase **Shire Structures** with **Commitment to Excellence**, for outstanding **Consultancy and Contracting Innovation** across all types of **Building Stabilisation Works**



awareness of the current climate emergency all projects have 'Carbon Calculations' compiled in accordance with the IStructE 'Carbon Calculation' tool with SCORS ratings provided for client/homeowners to view.

Construction Approach.

Unlike most of our competitors Shire offer a full range of structural stabilisation works, which allows us not to be guided to 'one solution'. All our stabilisation schemes are based on the correct structural solution for the building and not based on a particular product.

With our in-house construction teams, we can undertake the following works:

- ▲ Root Barriers
- ▲ Traditional mass concrete underpinning
- ▲ Mini Piling ('Shire Pile', 'Shire Clay Pile' Augered Piling, Driven Piles)
- ▲ Specialist Piling (Rock Anchors, micro piles)
- ▲ Internal Piled Rafts (using all pile types)
- ▲ Ground Anchors
- ▲ Specialist retaining wall solutions
- ▲ QuickBase - Patented and Award-Winning Foundation solution
- ▲ Resin Injection Techniques



ing Innovation



Prestigious Awards

Shire has been recognised with awards for both design and innovation since inception.

The awards for building design include the RIBA Architecture Award for the Zero Carbon House in Birmingham, RIBA West Midlands Award for the Michael Baker Boathouse, King's School, RIBA North East Award for Yarm School Auditorium and the RIBA West Midlands Award for St George's Primary School. Numerous projects have won the timber Society 'Wood Awards'.

The QuickBase system has also won numerous Product Innovation awards, including the Fenestration Industry Gold Award and 'Best Exterior Product' at 'Interbuild'.

ASUC, Subsidence Forum, I Love Claims, Future Build and looking ahead

"We were fortunate to have recently been invited to join the Association of Specialist Underpinning

Contractors (ASUC): the independent trade association advancing professional and technical expertise. We have joined with other leading specialist contractors and companies working across subsidence repairs, underpinning, retrofit basements and engineered foundation solutions.

"Shire are proud to have a major involvement with the Subsidence Forum, our senior management team has two former Chairman and represent Shire on the Executive Committee.

"Our Industry recognition has resulted in Shire being asked to speak and take part in the recent 'I Love Claims' Conference and on behalf of the

IStructE at the 'Future Build' Conference.

"This is all part of our plan to expand further in our bid to set leading benchmarks across the industry, with our growing workforce of structural engineers, site supervisors, site operative, CAD technicians, geotechnical engineers, telecoms specialists, surveyors, contract managers, through to customer service personnel, and IT."

If you would like to find out any more information, please see below.

T +44 (0)1527 579933
engineers@shire-uk.com
www.shire-uk.com



Why companies around the world are choosing TileCentral UK as their Quality Asian Tile supplier



In this issue of Building and Construction Review we have recognised TileCentral UK for its Commitment to Excellence in supplying Quality Asian Ceramic and Porcelain Tiles for the Construction Industry.

Based in Stoke-On-Trent, Staffordshire which is known as the historic ceramic capital of the UK, TileCentral UK is a family-owned B2B company that specialises in supplying quality Asian ceramic and porcelain tiles.

Since its establishment, TileCentral UK has strengthened its workforce and facilities, and now has its own offices and staff based in the major Ceramic clusters of South East Asia, India and China. "As a family-run business we also own a raw materials factory so we have a great relationship with the tile producers in Asia. We are proud of the fact that we can provide the safest, most secure route to accessing this dynamic continent," expressed Danny Bowers, Director at TileCentral UK.

The company supplies to a vast range of customers from distributors and shop builders to developers nationwide, and more recently has started supplying some major projects throughout the UK too. These projects include developments, restaurants, apartments, new build houses, and many more.

After just 9 months of being in business, TileCentral UK hit an astronomical milestone in its short history. This small family-run

company began importing quality Asian tiles in April 2022 and is already supplying goods internationally. This successful partnership came off the back of Danny identifying a gap in the market at a time when many UK companies were buying from European countries.





So far to date, TileCentral UK imports eight containers which hold 24 pallets a month – equalling close to 1,440m² of tiles per container. Off the back of this success, TileCentral UK has large plans to expand.



“We are looking to confidently grow our tile ranges as well as to expand our showroom here in Stoke-On-Trent. Combined we have over 50 years’ experience in the ceramic sector and having family overseas working with our partners is very important.” mentioned Danny.

We work hard to deliver great quality at prices cheaper than retail

Professional, determined and passionate were three words that Danny described the company as, and its clear to see why. In such a short period of time, TileCentral UK has developed an extensive portfolio that comes hand in hand with some of the best technical knowledge and expertise in the industry and a customer service that guarantees quality and consistency.

TileCentral UK offers some of the world’s highest quality brands and products such as: Technical Porcelain, Mosaic, Ceramic Floor Tiles, Ceramic Wall Tiles, and Polished Porcelain. All these products can be used in a number of different locations including Airports, shopping malls, Universities and Education Institutions, Offices, Vehicle Main Dealer Showrooms, Restaurants, Hotels, and Residential Homes.

Some of their most well-known work has been recognised all over the world and includes partnering with large global brands such as KFC in South Africa, McDonalds in South Africa and Malaysia, Eden Hotel in Bangladesh, BMW in Malaysia and Singapore, Toyota Car Showrooms in South Africa, Darwin International Airport



in Australia, Food Bank Central Office in Australia, King Saud University Hospital in Saudi Arabia, Cascada Mall in Lebanon, and many more.

The new website – www.central-tiles.com – has been designed to support all customers with any bulk orders. TileCentral UK also stock a large range of ROCATEX products that are developed and manufactured to the highest levels of performance. From standard set adhesives to rapid set adhesives, grouts, levelling compounds, primers, anti-fracture matting and specialist waterproofing solutions, you will find a full range of tile and stone care products from ROCATEX on pallet deals that start directly from £400.00.

Danny and the team are always keen to listen and react to all customers’ wants and needs, therefore, if you are looking for a specific product or brand that is currently not stocked, as a family-run business they always welcome customer suggestions and do the best they can to find the right solution for you.

For more information, see below:
T 01782 226166
Info@tilecentral.net
www.central-tiles.com





THE POWER OF EVOLUTION

Bona Mega EVO – Faster, better and safer floor surfaces

Bona introduces Bona Mega EVO, the next generation 1K waterborne lacquer with a new state-of-the-art crosslinking technology that activates when applied. The unique, non-yellowing formula delivers faster curing with excellent resistance to scratches, wear, and chemicals. With VOC levels below 3%, the lacquer contributes to healthier working conditions with a lower impact on indoor air quality.

Try the new step for medium wear wood floors, try Bona Mega EVO!

bona.com
info.uk@bona.com
Tel: 01908 525150



Announcing the launch of Bona Mega EVO™

Next generation lacquer with innovative crosslinking technology offers high durability with faster curing

Bona, a global, sustainably driven company that supplies products for installing, renovating, maintaining, and restoring premium floors is announcing the launch of its new lacquer, Bona Mega EVO™. This next generation lacquer offers a new state-of-the-art crosslinking technology that activates when applied.

The unique, non-yellowing formula delivers faster curing with excellent resistance to scratches, wear, and chemicals. With VOC levels below 3%, the lacquer contributes to healthier working conditions with a lower impact on indoor air quality.

Bona Mega EVO™ is the next evolution of Bona Mega, which was first introduced in 1996 and offered an industry-first oxygen crosslinking technology and, at the time, was considered a top choice among flooring contractors for use as a one-component topcoat for wood floors in environments requiring medium to light commercial wear resistance.

Bona Mega EVO™ is the next generation that incorporates a completely new and significantly faster technology that is unique to Bona. The self crosslinking occurs entirely within the lacquer without the use of any external components, making it a next generation coating.



product. It stands out from the competition due to its consistently high level of performance. Bona Mega EVO™ is the next step for coating medium-to light-commercial areas and domestic wood floors," said Thomas Hallberg, Director Product Management Professional EMEA/APAC, Bona AB.

Bona Mega EVO's new self crosslinking technology provides a topcoat that dries quickly, remains clear over time, offers excellent sanding ability, and has VOC levels below 3%. It has high filling abilities, low odour, and excellent scratch, wear, and chemical resistance. With Bona Mega EVO's fast-drying and quick cure time, the floor can be in use more quickly when compared to other one-component lacquers. This also means that the next topcoat layer can be applied much sooner than with traditional polymer technology.

Bona Mega EVO™ guarantees a uniform colouring of the wood floor even without the use of a primer making it possible to use just one product during the whole process. It has a non-yellowing formula with minimal odour during the application process and dissipate rapidly afterwards.

With VOC levels below 3%, Bona Mega EVO™ fulfills the EMICODE® EC1PLUS certification. Bona continues its work to phase out PFAS, of which Bona Mega EVO is no exception, promoting a safer environment.

www.bona.com

Hebridean housebuilder specifying SterlingOSB Zero on sustainability grounds

Situated seven degrees west of the Greenwich Meridian, and exposed to some of the harshest weather conditions anywhere in the British Isles, the Hebrides present a challenging location for building projects, prompting a recently-established building company to adopt offsite construction technologies which make full use of the technical and environmental benefits of West Fraser's SterlingOSB Zero.

70-22' Systems was established in 2022 by three business partners whose experience encapsulates architecture, education and manufacturing amongst other skills, and who decided to develop their own highly-insulated, modular timber building system. Growing organically by providing bespoke packages to clients of parent business, Fraser Architecture, 70-22' has already delivered properties on the Outer Hebrides; and has more than half a dozen schemes of different sizes in the pipeline for the coming year.

The trademarked system has been designed specifically to avoid the need for craneage, due to the inaccessibility of many sites, while the cellular component modules take the form of wall blocks, lintels and beams to span larger openings. The SterlingOSB Zero is CNC machined and assembled in the workshop before being filled with Warmcel recycled paper insulation.

Significantly, the 70-22' Systems design personnel were determined from the outset to utilise the West Fraser board because of its formaldehyde free formulation and the fact the material is manufactured in the North of

Scotland, using mainly locally sourced softwood from well managed forests.

70-22' Systems' co-founder and Commercial Director, Alex Durie, commented, "We use West Fraser's SterlingOSB Zero to construct our ecological building components, that are prefabricated in our workshop utilising CNC technology to achieve 0.1mm tolerances for each beam and block. It is the ideal material to use as the shell for our components, which are then filled with recycled insulation to achieve a building system that can achieve market leading thermal performance, with a U-value of 0.1 W/m²K, and excellent air-tightness, while maintaining a breathable floor, wall and roof construction. The added bonus of being formaldehyde-free, OSB enables us to build ecologically, utilising timber grown and processed in Scotland as we aim to limit the travel miles in each of our builds. The OSB produced by West Fraser has performed very well in our structural testing, with our system proving to be 1.6 times stronger than a traditional timber frame – and as our system arrives on-site as a component that is pre-fabricated, pre-insulated and designed for manual handling, it is much quicker to assemble."

Not only do all of the 70-22' Systems structures exceed the thermal requirements of Section 6 to the Building



Standards, Scotland, but can also be delivered as a Passivhaus compliant solution where the client or planning consent demand it. In the medium to long term, the business is building a pattern book of standard house types and has plans to establish a pilot plant on the mainland. The company will also be showcasing its system at the Self-Build and Renovation exhibition in Aviemore this autumn.

SterlingOSB Zero is available in a range of sizes and thicknesses up to 22mm as well as a T&G version ideal for flooring and decking applications. The high performance panel product, free of added formaldehyde, has also earned BBA approval and meets the requirements of NHBC Technical.

As is always the case, West Fraser's experienced technical team is available to aid with product specification, while downloadable data sheets are available at: <https://uk.westfraser.com>

For further information, call 01786 812921 or visit: <https://uk.westfraser.com>



Astutis.

Element 1.1
Morals and money

Start

Try our FREE Online IOSH Managing Safely Demo



Scan the code
to try our free demo

Now Available in **Multiple Languages**



Develop your people for a better organisation.

By applying the knowledge and skills gained from the **IOSH Managing Safely** qualification, you will be able to contribute to maintaining a safe and healthy workplace.

www.astutis.com

Phone: +44 (0)345 241 3685

Email: enquiries@astutis.com



Approved
training
provider
1857



Waterproofing performance from ARBOFLEX® PU for greener city living

The long-term performance and integrity of any roof covering are essential parts of constructing a sustainable and low maintenance building. But when the waterproofing is installed as a buried system, with finishes included green roofs, solar panels and porcelain terrace areas, installation values and product performance are more important than ever.

That's why the ARBOFLEX® PU liquid applied waterproofing system from Carlisle Construction Materials was chosen for Park Avenue Place at Neptune Wharf; a residential development comprising nine apartment blocks, surrounding a landscaped podium deck communal area. The prestigious project in Deptford, East London, led by Galliard Homes, features 176 luxury flats and forms part of a wider regeneration programme.

Consistent installation

The roofing project was delivered by T & T Roofing Limited, and leveraged the ease and speed of installation benefits of ARBOFLEX® PU; a single component liquid applied waterproofing system with proven root resistance. For this project, the core 10 year system was completed with the application of a U/V resistant top coat, applied to deliver a 20 year warrantied installation.

The ARBOFLEX® PU system was used as part of a complete roof build-up supplied by Carlisle for the roofs, terraces, and balconies of all the development's apartment blocks, along with the podium deck and the planters.

The roof build-up for each building included a consistent sequence of layers, beginning with Carlisle's ALUTRIX® vapour barrier membrane, tapered fire-retardant rockwool Multifix insulation, and the ARBOFLEX® Liquid Carrier Membrane, prior to application of the ARBOFLEX® PU liquid-applied waterproofing.

Working flexibly around the main contractor's programme and other trades on site, the roofing contractor monitored the deck temperature each day, to ensure optimised performance of the liquid-applied roofing system. The ARBOFLEX® PU system was rolled onto the roof surface, and the system's glass fibre membrane was laid onto the wet roof covering. A clean roller was then used to draw

the liquid through the mesh. This provides a quality assurance check to verify that the correct amount of liquid has been applied. The mesh is submerged by the liquid waterproofing to a minimum thickness of 1.5mm and, once the liquid has cured, the system provides a seamless surface. The U/V resistant top coat can then be applied to achieve the BBA-accredited 20 year warranty.

For the upstands, parapet walls and vertical surfaces of the planters in the communal outdoor areas, the T & T Roofing Limited team added ARBOFLEX® Thickener to the ARBOFLEX® PU system, which provides thixotropic properties to the liquid system, ensuring excellent coverage for vertical surfaces.

Quality assurance

Following completion of each roof area, the T & T Roofing Limited team used leak detection technology to check the integrity of the installation. The equipment passes electrical current into the roof build-up, triggering an alarm if any water ingress is detected. The ARBOFLEX® PU waterproofing system used includes a conductive backing in the form of a foil-faced carrier membrane and vapour control layer. This allowed the installation team to test each installed area for pinholes and porosity using a high-voltage Holliday detector, by passing a high voltage current across the surface using a brush or roller electrode, ensuring the integrity of the roof covering prior to installation of the green roofs, solar panels and terrace finishes.

Further quality assurance for the installation was underpinned by the collaborative relationship



between Carlisle and T & T Roofing Limited, with on-site training in the use of the ARBOFLEX® PU system provided by Carlisle, along with regular technical inspections.

Supplier support

To support T & T Roofing Limited in delivering the project on time and on budget across such a complex project, Carlisle worked collaboratively with the contractor to provide both efficient product supply and cost certainty. Carlisle's operational support involved providing a UK stock holding, allowing for efficient and timely supply of the liquid applied waterproofing, insulation, and ancillary products.

This mitigated the potential impact of price volatility by enabling early procurement, with materials stored securely until they were drawn down for deployment. This approach not only contributed to cost predictability for the project but also demonstrated a proactive effort to manage financial considerations and enhance project efficiency.

Sustainable development

Following the installation of the ARBOFLEX® PU roofing system, the green roofs, comprising a build-up of protection layer, drainage board, fleece layer, biodiverse planting substrate, cobbled borders, and an aluminium trim, was installed on each roof area. Renewable power for the apartments is provided by ballasted solar PV installations. These green areas, along with hard and soft landscaping on the podium deck to create a communal garden, ensures the development offers exceptional build quality, aesthetics and environmental credentials, creating a contemporary and sustainable living environment in East London.

www.ccm-europe.com/gb

Measuring building acoustics with Cirrus Research plc

In the evolving world of architectural design and construction, the significance of acoustical engineering cannot be overstated. Ensuring that buildings are acoustically sound not only enhances the comfort and privacy of occupants but also complies with various regulatory standards. At Cirrus Research plc, we are leading specialists in noise measurement equipment and offer robust solutions tailored for assessing building acoustics efficiently and accurately.

Our array of sound level meters and noise monitoring systems are pivotal for those aiming to measure sound levels and verify acoustic performance within buildings. These tools are designed to capture detailed noise data, from general ambient sound levels to specific acoustical testing like reverberation and sound insulation.

The application of Cirrus Research products in building acoustics involves assessing how sound travels through different building materials and spaces, which is crucial for identifying areas that require soundproofing improvements.



By utilising cutting edge technology from Cirrus Research, such as the Quantum Indoor Remote Cloud-Based Noise Monitor, professionals can ensure their projects meet the necessary acoustical standards, leading to safer, quieter and more comfortable living and working environments.

Learn more here:
<https://cirrusresearch.com/building-acoustics>

Energy from the ground up

Do you know that because they use freely available heat energy from the ground, Ground Source Heat Pumps (GSHP) achieve higher efficiencies than any other heating system?



By delivering up to 4 times (on average) more heat energy than the consumed electricity to run the unit, a heat pump can reduce a building's heating costs by around two-thirds compared to direct electric heating.

Using a GSHP, businesses can benefit from lower energy bills of up to 70% versus using a traditional gas or electric boiler system.

For businesses that use lots of heat in their operations, a cheaper source of heat is a welcome way to cut energy costs and reduce the carbon footprint.

No buildings are off limits when it comes to renewable energy and combining heat pumps with technologies like solar photovoltaic (PV) systems can create a robust and sustainable energy mix, and depending on your own situation there are various grants which can be accessed too.

Grants of up to £7,500 are available through the Boiler Upgrade Scheme to put towards the cost of a GSHP for a

property you own (including a business or a second home) if you are replacing fossil fuel heating systems – such as oil, gas, electric or LPG.

This means you should see a return on investment fairly quickly, in addition to the ethical move you have made to switch by switching to more environmentally friendly heating systems.

Go Geothermal's range of CTC Ground Source Heat Pumps provide an ideal solution and come with the Made in Sweden guarantee of quality.

And with support available from initial conception through to installation, we are true one-stop-shop for all renewable energy heating needs in agriculture.

Please call us on 01833 720228,
email: sales@gogeothermal.co.uk
visit: www.gogeothermal.co.uk

Case study



C40 Curaflex Doyma Gaskets

One of the UK leading installers of pre-insulated district heating systems, Vital Energi Utilities Ltd, use Doyma Curaflex C40 Gaskets to provide a water and air tight seal for all below ground building entries. The specialist installations can be subject to slight movement through expansion and contraction as the system heats and cools.

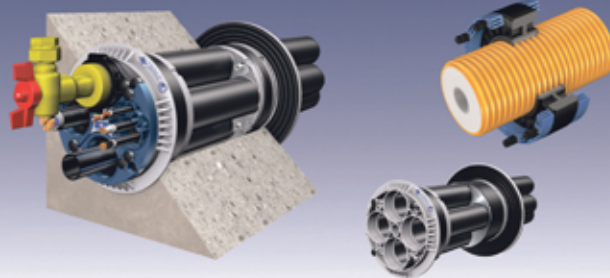
The Curaflex C40 Gasket is designed to accept the axial movement that may occur during the operation allowing Vital Energi to seal both the opening of the building

façade as well as the HDPE outer-casing.

Vital Energi's Managing Director, Ashley Walsh, noted, "This provides our installation with an excellent termination. It provides confidence both to ourselves and our clientele that we'll leave the fully installed works sealed from any moisture ingress while providing a product that has the flexibility and capability to work alongside our very complex pre-insulated products."

For more information visit: www.servicesealingsolutions.co.uk

Service Sealing Solutions Ltd – suppliers of DOYMA products



Service Sealing Solutions Ltd are the sole UK distributor of DOYMA products. Wherever services are installed through walls, ceilings or floors, penetrating water may cause damage to buildings. Lack of attention to the points of entry of pipes and cables into the building can have serious results: damp cellars, equipment damaged by water ingress and high repair costs. Service sealing systems ensure professional and perfect pipe sealing, thus presenting excellent preventative measures against structural damage.



01952 510050 www.servicesealingsolutions.co.uk
sales@servicesealingsolutions.co.uk

Service Sealing Solutions Ltd enters its sixth year of rapid success

Service Sealing Solutions Ltd is the sole UK distributor for the sealing industry's top manufacturers; DOYMA and HKD. It was when DOYMA granted Tina McAra, company director, the exclusive rights to distribute their products in the UK in August 2018, that led to the formation of Service Sealing Solutions Ltd.



making any maintenance easier to complete with little disruption. Service sealing systems also prevent structural damage because wherever service ducts are installed through walls, ceilings or floors, penetrating water may cause damage to buildings."

resources. The majority of the products distributed by the company are gaskets, which seal holes in basements and cellars. These mechanical fixing products are



a far superior version of expanding foam and are used by the commercial market in homes and buildings to guarantee excellence.

With seven years of experience as a Technical Sales Engineer for the previous UK DOYMA distributor in her skill set, Tina grabbed the opportunity to contact DOYMA in Germany to ask whether she could take on the distribution in the UK. DOYMA were pleased to hear this as no-one else in the UK had the knowledge about their products that Tina had, therefore, DOYMA granted Service Sealing Solutions Ltd exclusivity in the UK.

Demanding building types, such as power plants, large industrial plants, reservoirs or airports, often require highly specialised custom-made constructions. They place high



demands on the fact that building penetrations such as cables and pipe work, need to be permanently sealed. Through working with DOYMA, Service Sealing Solutions Ltd is able to provide bespoke sealing answers to many different problems.

In terms of new developments, DOYMA has recently released its new generation Curaflex Nova® gaskets – professional solutions for tradesman with uniquely safe installation. Providing tradesmen with professional gasket inserts, the new generation of Curaflex Nova® gasket inserts instantly solves sealing problems and is adaptable for multiple applications.

Service Sealing Solutions Ltd specialises in providing the best in German engineering to seal penetration points in walls and floors to permanently prevent any infiltration of gases and water into the building. The products are designed to solve all watertight duct sealing requirements and prevent against structural damage.



With other distributors providing similar products, what makes Service Sealing Solutions Ltd stand out? Because it only uses the very best in German engineering, the company's expertise, experience and willingness to go the extra mile for every customer means it really doesn't have to

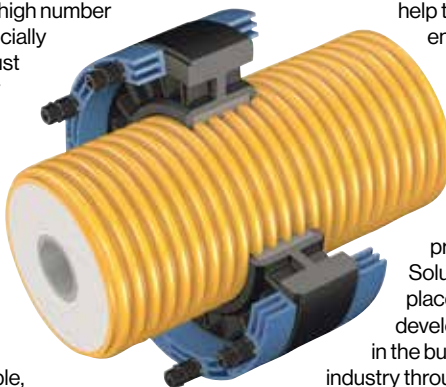
Tina commented, "We provide DOYMA's products mostly to builders of commercial properties and we have provided for many of the large projects in London including HS2 and Kings Cross. Quite often services and electrics are installed underground and therefore have to have guaranteed water tightness."

DOYMA has the expertise and experience of over 50 years to develop and produce the best solution for your building or project. State-of-the-art design and manufacturing methods as well as professional simulation methods will help to



work all that hard to remain competitive. The aforementioned 25 year guarantee is a very important aspect of all its services, and cannot be matched by competitors. Combine that with its years of experience in the industry which allows them to consistently deliver on every level to the customers exact requirements means they are a distributor you can thoroughly trust.

Based out of Shropshire, Service Sealing Solutions Ltd has a UK wide customer base and works hard to distribute a high number of different products especially for DOYMA. Marked not just a distributor, the company also covers every aspect of a project, required by the contractor. Tina continued, "When you are planning a build, it is easy to forget the little details that make sure your building stands the test of time. Correct sealing can help keep the building's utilities accessible,



ensure safety when using special constructions, and all with an unrivalled 25 year warranty. Being the sole UK distributor for these products, Service Sealing Solutions Ltd is perfectly placed to guide contractors, developers or anyone involved in the building and construction industry through the relevant

Contact
T 01952 510050
sales@servicesealingsolutions.co.uk
www.servicesealingsolutions.co.uk



Service Sealing Solutions Ltd

LSTA: Specialist Applied Skills Programme (SAP) Course

Places are available for the Lead & Hard Metals Specialist Applied Skills Programme (SAP) for the 22nd of January 2024. Candidates will achieve the following:

- ▲ NOCN Level 2 NVQ Lead & Hard Metals Roofing Operative & City and Guild Accreditation Traditional Intermediate Lead or Hard Metal craft. An 18 month programme with 7 weeks training split into 1 week blocks at the LSTA followed by an onsite assessment for NVQ.
- ▲ NOCN Level 3 NVQ Heritage Lead & Hard Metals Roofing Operative & City and Guild Accreditation Traditional Advanced/Heritage Lead or Hard Metal craft. Fully funded apart from £99.00 registration fee. An 18 month programme with 3 weeks training split into 1 week blocks at the LSTA followed by an onsite assessment for NVQ.

CITB funding is available for companies that are CITB Registered, for accommodation, food & travel through the CITB 'Travel to Train' see link. 80% of the costs are covered through this scheme



www.citb.co.uk/levy-grants-and-funding/grants-and-funding/apprenticeship-travel-and-accommodation-funding-travel-to-train

Investing in the next generation of Lead or Hard Metal workers helps support your business success for the future.

Please call: 01622 872432 or 07961 659802 or email Sharon at: info@leadsheet.co.uk for further information.

Hydro Heater's



Hydro Heater's brand new portable rapid water heater can heat hot tubs, pools and any contained water volume in record time.

The revolutionary new heater is particularly well suited to holiday park, holiday let and glamp site operators who have hot tubs as part of their offering.

The Hydro Heater's one hour heat up time now enables operators to drain, refill and reheat their hot tubs within a short time window, thus ensuring that their tubs are hot and ready for customers to enjoy as soon as they check into their accommodation later the same day.

Pictured with Hydro Heater Managing Director, David Donald, is Ryan Birchnall,

product quality manager at Forest Holidays, taking delivery of 10 Hydro Heaters at their site in Keldy, North Yorkshire. The introduction of the Hydro Heaters will mean substantial savings in time and energy costs to the tune of tens of thousands of pounds per year on each of their parks for the company, a certified B Corporation. Not to mention the smiling faces of guests who can enjoy their hot tub as soon as they arrive!

The Hydro Heater's 60kW output will heat a hot tub 20 times faster than a typical electric heater, with operating costs from 5.5p per kWh.

Contact
T +44 (0) 203 457 0343
www.hydro-heater.co.uk



PRINCIPAL
Business Finance

- BUSINESS LOANS
- HIRE PURCHASE
- LEASE FINANCE



What can be financed?

- Demo equipment
- Groundworks
- Lifting equipment
- Cashflow
- Legal fees
- And so much more



“Securing finance for us was seamless and incredibly helpful. Working with PBF was a pleasure, and their expertise expedited our growth in a way we couldn't have achieved on our own. Not to mention, we were able to secure unbeatable rates. Highly recommended.”

Jack Brundle



www.principalbusinessfinance.co.uk



info@principalbusinessfinance.co.uk



01604 217 998



Principal Business Finance Ltd is an Appointed Representative of AFS Compliance Limited which is Authorised and Regulated by the Financial Conduct Authority No. 625038

Introducing the Eco Clipper FM343



Eco Clipper is known for its efficient and quiet electric mowing systems to maintain large lawns. The unique Eco Clipper mowing system allows it to mow the lawn even in less than optimal conditions, such as with wet grass and weeds.

To meet the demand for more lightweight mowers suitable for most

park tractors from 40 hp upwards, the Eco Clipper FM343 has been developed. This three-part Eco Clipper front mower cuts 343 cm wide and folds to a transport width of 170 cm. As with the EC-FM4, electricity is provided by a PTO-powered generator behind the tractor.

www.ecoclipper.com

Efficient electric mowing systems for maintaining large area turfgrass

Eco Clipper FM343
for compact tractors
www.ecoclipper.com

THEORIES LANDSCAPES

PLAY AREA DESIGN AND INSTALLATION

t: 020 7254 7282
m: 07904901770
info@theorieslandscapes.co.uk
www.theorieslandscapes.com

IMPROVING EFFICIENCY & SAFETY WORLDWIDE

www.ground2control.com

Trusted by

- Golf clubs
- Football Stadiums
- Grounds Maintenance
- Local Authorities

Tree surveys for development

Barnes Associates Ltd – Providing tree surveying to Architects, Town planners and developers, throughout the UK.

Trees are our speciality from Tree Constraint Plans, Arboricultural Impact Assessments & Tree Protection plans.

Arboricultural Method Statements are often a conditional item these need to be practical and involve the whole team to be successful, we act as retained arboricultural consultant for site inspections.

Our associate ecologists provide Biodiversity Net Gain (BNG) appraisals and associated reports, landscape plans and management plans are also provided.

We problem solve when building near trees. Protected trees even with TPO (Tree Preservation Orders) can often be built near with the right approach and techniques.

We work with your design teams to ensure a smooth process for our clients.

Tree plans are provided in CAD 2D and 3D along with drone imagery if required. Our tree surveyors are experienced and qualified to high standards.



Our Tree Diagnostic team provide Tree Root Radar scans providing root mapping services, along with Tree stability testing of trees throughout the UK.

Contact Ian Barnes, Director and Lead consultant, with your project needs, in total confidence.

T 01423 322371
Whatsapp: 07483 116044
Email your project to:
info@barnesassociates.co.uk
www.barnesassociates.co.uk

Plastic recycled into low carbon seating

In 2010 three brothers from Bolton decided to turn mountains of British waste plastic into durable rot-proof building materials and outdoor furniture. They wanted an ethical business producing recycled plastic products attractive to both domestic customers as well as the building and construction industry.

Kedel Limited launched and developed over 30 new products designed for schools and local authorities in the first year of operation.

The ArcelorMittal Orbital Tower built for the London Olympics was created using 600 pre-fabricated star-like nodes, made from steel, and assembled in Bolton.

Kedel supplied recycled plastic decking boards for the viewing platforms to reduce its carbon footprint, and this also gave the platforms a long life with no maintenance requirements.

Kedel's manufacturing unit in Burnley stocks over 2000 recycled plastic products such as **decking boards, sleepers, fencing, cladding and ground reinforcement grids**, plus **outdoor furniture** such as **multicoloured benches, picnic**



tables and children's outdoor play equipment.

The independent reviews platform, Feefo, awarded Kedel Limited an 'Exceptional Service Award' in 2024.

"Exceptional Service is our most exclusive customer service award. This accolade goes to clients who receive market-leading feedback. Winners have achieved the highest rating, or the biggest improvement, in their industry. Only 32 clients are awarded the Exceptional Service Badge."

T 01282 861325
sales@kedel.co.uk
www.kedel.co.uk

Sustainable timber cladding

Contemporary construction demands sustainable, functional and aesthetic building materials. Our premium timbers meet these specifications and add a timeless quality to interiors and exteriors.



Shou Sugi Ban®
 Inspired by Japanese Yakisugi timber preservation, Exterior Solutions Ltd created Shou Sugi Ban®. In addition to the traditional blackened, crackled finish, our finish options bring the technique up to date.

Inspiring range of finish options
 If blackened wood is too dark for your project, our collection includes a selection of mid to light-grey tones. The smooth, subtle finish of Kebony Radiata and Yūkari Numachi are popular options.

Alternatively, for a natural wood finish, Accoya® Tenki and Larch Shiberiatora showcase the beauty of timber grain. These add a warm, tactile quality to garden buildings and rustic-style retail stores.

For a splash of colour, the peacock tones of Accoya® Tobu, the deep red of Yūkari Kōsui or our vibrant range of Douglas Fir finishes create unique and impactful hotel and restaurant interiors.

All finishes enhance the durability of the

timber by drawing out natural resins. These provide a moisture, rot and insect-resistant barrier to minimise maintenance. It's a practical and visually desirable way to elevate modern builds and heritage renovations.

Timber cladding options
 In addition to Oak, Larch and Douglas Fir, the Shou Sugi Ban® range includes Kebony and Accoya®. These modified timbers are exposed to a chemical treatment to enhance stability and durability.

We supply Shou Sugi Ban® with installation instructions, matching tipped screws and a tin of finish treatment for cut lengths. These ensure a professional finish can be achieved on every project.

[Click here to download the Shou Sugi Ban® brochure.](#)

[Contact Exterior Solutions Ltd on 01494 711800 for samples and quotes.](#)

TRUST EVENTS STAGES LTD



STAGES, PLATFORMS FOR SHOWS FESTIVALS, INCLUDING FILM AND TV

Take a look at some of the structures we own and feel free to give us a call. There's a lot more to Trust Events Ltd than staging such as SOUND, LIGHTING, RIGGING, PIT BARRIERS and we would be delighted to hear from you. Trust Events Ltd are based in Somerset, and we provide indoor and outdoor festival stages and platforms all over The UK and EUROPE.



01749 841720 | spike@trustevents.co.uk

Please visit www.trustevents.co.uk

See you in the Sandpit

Sandpit Creations is an award-nominated creative workshop based in London, with a mission to create innovative sets, props, and experiences that both engage audiences and are built to withstand interaction.

Sandpit Creations works with a small but widely skilled group of individuals, bringing together carpenters, creative and concept designers, scenic artists, textiles

specialists, creative technologists, prop makers, sculptors, and metalworkers as well as writers, directors and performers. Bringing these skills together under one roof ensures seamless communication and collaboration between each element of a project.

They have experience in a range of modern and traditional fabrication techniques including joinery,

fibreglassing, textural effects, microelectronics, and robotics. They are also passionate about the latest developments in technology to deliver cutting edge special effects and interactive experiences.

Sandpit Creations launched in January 2023, and are proud to have

worked with end clients including Samsung, Doc Martens, Aardman, Cupra, Kew Gardens and Wakehurst. They have ongoing

projects with some of the UK's foremost museums and attractions. They also work with many theatre and immersive companies to develop and build sets, props, costume pieces and even full show concepts.

Contact

M 07547 352391
info@sandpitcreations.com
www.sandpitcreations.com



info@sandpitcreations.com 07547352391 www.sandpitcreations.com

STEP FROM THE STAGE TO EMERGE ON A MYSTERY JOURNEY

SANDPIT CREATIONS

YOUR CHANGED

Creative design and fabrication for arts, entertainment, events, and attractions

Warwick Buildings Ltd wins Award of Excellence for 2024

Warwick Buildings Ltd is a leading local supplier of high quality timber buildings, specialising in garden offices, modern garden rooms, and wooden garages. With a focus on quality craftsmanship and a commitment to using sustainable materials, Warwick Buildings is a trusted name in the industry, providing customers with versatile, aesthetically pleasing structures enhancing their outdoor spaces. Founded in 1988, at the heart of Warwick Buildings' success is its customer-centric approach. The company prides itself on delivering a personalised service, assisting customers from the initial design phase to the final installation.

E2 Media have recently unveiled their highly anticipated 2024 Awards of Excellence. Warwick Buildings Ltd, have secured the prestigious award for the second consecutive year. Their exceptional dedication to providing unparalleled customer service has set them apart.

Warwick Buildings' outdoor buildings are designed to meet the growing demand for functional workspaces within the tranquillity of your home.



These structures are crafted with precision and attention to detail, utilising high-quality timber. Whether for remote professionals or those looking for traditional office spaces, these garden offices are a perfect solution. Warwick Buildings offers a wide range of customisation options, allowing customers to create a building that matches their specific requirements. Warwick Buildings incorporates advanced insulation techniques and double-glazed windows into their garden rooms and offices, making them energy-efficient, suitable for year-round use.

So, if you're looking for a suitable outdoor office space or want to increase your living space then Warwick Buildings is the go-to choice for all your needs.

For more information, visit: www.warwickbuildings.co.uk

Transform your space with Quickpadel

Your all-in-one turnkey solution for bringing the excitement of Padel Tennis to your club, school, sports venue, or workplace. Whether indoor or outdoor, let's discuss how Quickpadel can elevate your game!

Visit www.quickgrass.co.uk for natural looking artificial grass and sports / play surfaces!

quick grass

quick padel

Contact us
 Tel: (+44) 1527 910 621
 Mob: (+44) 7852 693 851
www.quickpadel.co.uk

Find us at
 Quickpadel Limited
 Unit 128 Harris Business Park
 Hanbury Road
 Stoke Prior, Bromsgrove
 Worcs B60 4DJ

Cibes Lift UK

Cibes Lift UK is one of the leading suppliers of Platform Lifts, Cabin Style Platform Lifts, Home Lifts and Goods Lifts - offering UK wide coverage and support. Our team can help find the perfect solution for your building, whether this be a commercial, public, private, or home environment.



- ▲ Minimal refurbishment.
- ▲ Low construction costs.

With geographically focused dedicated sales teams and customer service, Cibes Lift UK offers:

- ▲ Lift installation without having to make major structural alterations.
- ▲ Quality, long-lasting Swedish engineering.
- ▲ The best technical support on the market.
- ▲ Excellent after sales service.
- ▲ Customer satisfaction guaranteed.

All Cibes lift solutions are delivered in ready-made modules ensuring fast delivery and smooth installation.

- ▲ Fast track manufacturing & delivery.
- ▲ Installation in just a few days.
- ▲ Reduced labour costs.

Cibes Lifts are machine-room-less (MRL), offering compact accessibility resolutions with minimal pit and top height requirements compared to traditional Passenger Lifts. Serving up to 20m in travel height and holding a weight capacity of up to 1,000kg.

Wondering what lift to choose for your office or home? Need disabled access or just looking to upgrade your home? Cibes Lift UK is the number one choice for your residential and commercial lift requirements.

For more information, see below.

T 0800 085 0269
info@cibeslift.co.uk
www.cibeslift.com/gb

- ▲ Minimal structural impact.



CIBES HOME LIFTS

- Future proof your home
- Add value to your property
- Bring people together
- Minimal structural impact
- Minimal refurbishment
- Low construction costs

0800 085 0269 INFO@CIBESLIFT.CO.UK CIBESLIFT.COM/GB



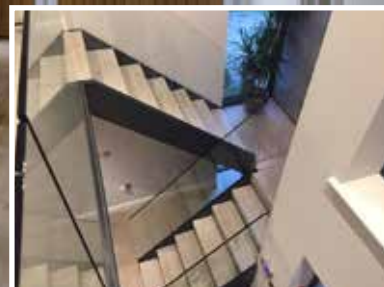
BEAUTIFUL STAIRS MAKE BEAUTIFUL HOMES

Stair Pro Ltd crafted a modern oak staircase that integrated charmingly into the property interior. The European Oak stair treads and handrail were colour matched to the existing flooring, creating smooth lines and a sophisticated look.

Opening a new showroom near Fakenham this summer, the Stair Pro Ltd team invites visitors to experience for themselves the quality workmanship that is invested into every project. The new premises will display many examples of the diverse staircases, balconies, balustrades and decking Stair Pro Ltd creates.



01760 751679
www.stairpro.co.uk



BespokeCrete

BespokeCrete creates custom and bespoke furniture, outdoor kitchens, kitchen worktops, waterfall islands, patio sets, indoor table & bench sets, coffee tables, baths, sinks and so much more. Every item is custom built, by hand – using local materials and trades, in our Norfolk workshop. BespokeCrete crafts furniture from wood or steel – that is coated in our full Microcement system, over several days – creating a strong and fully waterproof surface that is heat, stain and scratch resist.



it in Microcement – creating a personal and unique piece of art/ furniture.

With our team of in-house steel fabricators and master carpenters – we can bring our customers design concepts to reality. At BespokeCrete – we have a range of stunning furniture or we can create a completely bespoke design of your choosing.

Bespokecrete work with designers, architects, contractors and the general public with a large proportion of our work being completely bespoke. Microcement is available in a multitude of colours – now with the option to colour match to RAL, Farrow & Ball, Dulux, Little Green, Fired Earth and Pantone colours. For more information, see below.

Microcement is a thin 2-3mm cement and resin hybrid coating that can be applied to a multitude of surfaces. It is great for inside or outside use, creating stunning furniture from wood and coating

Contact
T 0800 061 4157
info@bespokecrete.com
www.bespokecrete.com



BESPOKE CRETE
 All handmade in the UK & built to last

MICROCEMENT BESPOKE CREATIONS

BespokeCrete creates beautiful, elegant and unique furniture, kitchen worktops, outside kitchens, sinks, baths and totally bespoke items that are made to order. Microcement is applied by hand and consists of primers, base coats, mesh, Microcement coats and sealers - creating a fully waterproof, stain, scratch and heat resistant surface. Perfect for indoor and outdoor use.



Please feel free to send us a message so we can make your design idea a reality.
 08000614157 info@bespokecrete.com www.bespokecrete.com

GREAT BRITISH LIGHTING
 CRAFTSMANSHIP SINCE 1887

Global lighting manufacturer with over 100 years of experience

Great British Lighting is a specialist lighting manufacturer with a reputation and portfolio established over the last 100 years. Our work is primarily in the manufacture of decorative light fittings for Public Buildings, Cathedral, Museums and Theatres and International Theme Parks: from one-off reproductions to large scale manufacture. All items are manufactured and assembled at their premises in Fleetwood, Lancashire.

With an archive of over 35,000 products, drawings and specifications, Great British Lighting can reproduce almost any luminaire from the last century and earlier, employing the latest CAD technology coupled with traditional craft skills. Great British Lighting also offers bespoke metalwork service producing high quality items such as balustrade, ecclesiastical fittings and door furniture.

Great British Lighting offer a comprehensive cleaning and restoration service, working sensitively on conservation projects to bring lighting and metalwork back to its original glory.

Recently completed the refurbishment of existing lighting at Rochdale Town Hall.



Please visit www.greatbritishlighting.co.uk
 ✉ sales@greatbritishlighting.co.uk | ☎ 01253 873503

Find your perfect platform



With 35 years of experience in the access industry, Independent Access Sales will find the platform most suited to your needs. In addition to providing expert experience and bespoke consultancy, they also manage the servicing of the supplied platform through our contract servicing department.

In 2023, Independent Access Sales partnered with Powered Access Giants, Socage, in a collaboration that led to them being the sole provider of Socage machines in the United Kingdom. Not only Do Independent Access Sales sell Socage machines, but they are also the sole providers of spaces and servicing, making them your one-stop shop for anything Socage. Due to

their after-sales manner and unmatched customer service, it is no wonder Independent access Sales are reaching new heights within the industry.

As well as Socage Machines, Independent access sales offer a wide range of EasyLift Powered Access. Throughout the power access industry, there must be a machine that suits all jobs, big or small; with such a wide range of machines, Independent Access Sales ensures you find the perfect machine.

Finding the perfect machine can often feel like a daunting task, which is why Independent Access Sales supports you throughout the process with an easy-to-navigate search function on their site, continuous support from their staff and over 35 years' worth of invaluable experience.

In addition to providing an array of machines, Independent Access Sales also offers servicing of any machine across the UK. With engineers based in Aberdeenshire, Liverpool, Norwich, Bristol and London, find comfort in knowing the Independent Access Sales are there to support you in servicing your machine.



Let Independent Access Sales assist you in finding your perfect machine by visiting the website: <https://iasales.co.uk/>

Surveytech now offering Matterport rental service

Surveytech, the surveying equipment company, has announced that it is offering the Matterport range of scanners alongside its hire fleet from brands such as Leica Geosystems, Geomax and Screening Eagle.

Matterport is the leading platform for 'digital twins' of the built world, allowing users to scan a space, and then without any specialist knowledge or high-performance computing power, it can be processed in the Cloud to create an immersive virtual tour.

The Matterport model, which consists of a full 3D model of the space as well as the virtual tour can be accessed on the Cloud by whoever the user wants, and other deliverables downloaded like an e57

pointcloud, CAD drawing or full 3D model for programs like Revit.

If the user employs the Matterport Pro3 camera, which is available for hire as well as sale from Surveytech, then dimensions of the space are captured to an accuracy of 20mm at 10m scanning distance. At this level

of accuracy, Matterport scanners are able to be used for most design purposes in architecture, engineering and construction.

This is why Resi, the UK's leading home extension company,

have recently adopted the Pro3 as their scanner of choice for all their projects. If you'd like to find out more or hire for yourself, you can contact the experts at Surveytech below.



Contact <https://survey-tech.co.uk/>

STEELO

Structural Steel Fabricators.

ON-SITE

ON-TIME

EVERYTIME

Call

0208 569 8144

Email

Sales@SteeLo.co.uk

Visit

Unit 9, Fairway Trading Estate
Hounslow, TW4 6BU



Best Structural Steel Fabricator - UK
2022 & 2023

Reliable and safe access equipment

Atlantic Access Ltd are scaffolding erectors and hirers based in Liverpool and the North West. Providing safe, access equipment for a multitude of different jobs including roofing, bricklaying and much more, for industrial, domestic and commercial projects.

Maintaining a committed, skilled and loyal team, Atlantic Access Ltd offers a highly professional service and utilises its experienced and expert team of long serving employees, of 10 years plus. This has positioned the company with the industry knowledge to assist with varying sized projects and Atlantic Access Ltd has built a strong reputation for its high quality service, personable approach and competitive prices.

The company offers its services for all residential work, new build properties, demolition work and commercial. Some of its recent commercial projects include: Vinci IHP on Preston Royal Hospital, the Boohoo main office in Manchester for Hightown Construction, Grahams Liverpool flyovers demolition, Parkinson Construction on Oldham Royal Hospital and Salford Hospital, John Turners on Whiston Hospital, ongoing



Maintenance package for Daresbury Science Technology Park and ongoing works for the National Trust on Speke Hall and Chambre House in Liverpool.

If you would like to find out more, please see the details below:

Steve Long, Director
T 0151 549 1551
M 07917 193357
ste@atlanticnw.co.uk
info@atlanticnw.co.uk

INTEGRASPEC® is your best choice of ICF to deliver

The Ballantine Building Solutions team has over 20 years experience as ICF Builders suppliers, Installers & Builders using ICF and have worked on many successful ICF projects.



ICF is based on hollow lightweight block components that lock together to provide a formwork system into which concrete is poured. The blocks are made from expanded polystyrene panels fixed together with plastic webs (reducing thermal bridging) to create a formwork to which horizontal and vertical steel reinforcements can be easily added for extra strength. Once braced, concrete can be poured into the

forms enabling fast construction one storey at a time.

The ICF walls as soon as built are waterproof even before the external finishes are applied, allowing internal work to commence sooner. This ensures for an incredibly fast & efficient construction that isn't impacted by adverse weather in the same way traditional masonry is. Cold temperatures do not affect progress.

With an average saving of between 25% to 30% in both cost & building time and low 'U' Values from 0.23W/m²degk down to 0.11W/m²degk – When all factors & benefits are taken into consideration, ICF becomes extremely competitive compared to both traditional building methods and lightweight framing.

T 028 9590 6508
admin@integraspec.co.uk
www.integraspec.co.uk

NeutraliZer™ CO2 Concrete Washout Solution

Key Features

- Continuous processing system – advanced in-line mixer
- Skid-mounted – highly mobile – small footprint
- No hazardous chemicals or batch treatment
- Fully automated – user-friendly – Plug and Go!
- Rugged construction
- Integral flowmeter – alarm beacons (pH/out of gas)
- Remote Cloud-based monitoring
- Up to 80m³/h flow rate



Applications

- Construction and building sites
- Concrete wagon wash outs
- Mining
- Quarrying
- Demolition sites
- Concrete paving and brick manufacturing
- Chemical and Pharmaceutical Industries
- Railway and Road Infrastructure
- Water Companies



Contact Smart Storm
01422 363462
www.smartstormgroup.com



ELECTRIC VEHICLE CHARGING POSTS

We manufacture high-quality, stainless-steel mounting posts for EV chargers, supplying many sectors of the EV industry. All our posts are designed & made at our UK facility.



EVCAP

01636 957950
info@evchargerpost.com
www.evchargerpost.com

Scan for the full range, including our new value range of charger posts, ground boxes, wall brackets, and more.



Easyflow

Easyflow offers you with a single point of contact and a turnkey solution for all your underfloor heating and liquid floor screed needs. From designing and installing your underfloor heating, to a full laser survey on site, to the supply and installation of your liquid floor screed.

Benefits of Underfloor Heating

- ▲ Up to 30% lower running costs than radiators
- ▲ Avoid overheating and energy waste – heats more efficiently using just 35 degree water
- ▲ Low carbon footprint
- ▲ Can be used in conjunction with any heat source
- ▲ Completely versatile, lay tiles, carpet, or wood
- ▲ Control remotely

Benefits of Liquid Floor Screed

- ▲ Reduced screed thickness
- ▲ Better heat conductivity
- ▲ Fast drying and thermally guaranteed options
- ▲ Can be force dried
- ▲ Greater compressive strength than traditional screeds
- ▲ Levels survey carried out for accuracy
- ▲ Environmentally friendly

UNDERFLOOR HEATING

We are dedicated to providing our clients with the very best in underfloor heating systems, together with customer care above and beyond expectations. Our experienced consultants are dedicated to investing their time in planning and



designing your underfloor heating system, ensuring that you are supplied with an underfloor system of the very highest standard. At Easyflow good advice & quality products go hand in hand.

LIQUID FLOOR SCREED

Anyhydrite flowing floor screeds are based on a synthetic anhydrite binder rather than OPC Cement giving them many unique benefits over cement screeds, the most obvious difference is their fluid application compared to semi dry cement screeds, but they also offer higher compressive and flexural strength, lower shrinkage, eliminate reinforcement, improve surface finish and greatly improved underfloor heating performance.

FASTER-DRYING SCREEDS

Easyflow can now supply a range of faster-drying products that can offer reduced drying times – 10 days for tiling and 28 days for wooden floors in non-heated floors, in heated floors 14 days for tiling and 21 days for wooden floors.

T 01743 298001
www.easyflow.org

Air conditioning and heating solutions

Clima-Tech was founded in 2015 by Ashley Shemmings, a self-employed specialist in heating engineering with over 18 years' experience in the engineering industry.



Clima-Tech is a family run business and alongside Ashley, wife Franki Shemmings works in the office. What started off as a maintenance and servicing company, soon evolved into a specialist multi-faceted service with a proven track record in the electrical, refrigeration, domestic, and commercial sectors.

Clima-Tech is well trusted and well established in the renewable energy field. Clima-Tech is hands on and works closely with its clients to ensure that the best service is delivered. Clima-Tech is an approved contractor by the following certified bodies: Microgeneration Certification Scheme (MCS), Renewable Energy Consumer Code (RECC), IWA, and REFCOM. Furthermore, Ashley has trained to the highest level, holding qualifications such as City & guilds 2360 NICEIC certified, City and guilds F-GAS, B-PEC G3 unvented, B-PEC Heat pump design, and B-PEC water regulation.

Clima-Tech has been the receiver of many awards over the years receiving first, second and third place in the following: 2019 National Energy Efficiency Awards,

Energy Efficiency Champion and Commend Renewable Heat Installer & Contractor 2020/21 and the National Energy Efficiency Awards 2020/21. Another milestone for the company was in 2021 when Clima-Tech employed its first member of staff.

Clima-Tech specialise in a range of core services in the renewable energy field for MCS/RHI registration systems, Heat pumps, Heating systems, Electrical system design and installation, System commissioning, Air conditioning, Solar panel specification, design, installation, repair and maintenance, and Underfloor Heating and Plumbing works.

We now have a showroom open in Martlesham. We want to help more households experience the benefits that heat pumps can bring – and to encourage early adopters to make the move. Our showroom will share information about all the advantages of heat pumps, while busting myths about barriers to adoption. Our showroom has a working heat pump in place to demonstrate the technology in action, alongside everything that goes with them, including cylinders & controls.

T 01473 798321
ashley@clima-techservices.co.uk
www.clima-techservices.co.uk



Residential Ventilation Experts

Southwest Ventilation are Specialist installers of residential ventilation systems to home owners, landlords, developers, local authorities and housing associations across Cornwall and The South West of England

We have the knowledge, skills & equipment to offer all types of ventilation solutions. Southwest Ventilation are proud to offer many British made products. If you would like a free, no obligation site survey or just some friendly expert advice, call the ventilation specialist today.

All South West Ventilation installers are fully qualified and insured to install residential ventilation products for homeowners, developers, landlords, local authorities and housing associations.



Tel: 01326 727101 | Email: info@southwestventilation.co.uk | Web: www.southwestventilation.co.uk
 Address: Ponderosa, Trevenen Bal, Wendron, Helston, Cornwall TR13 0PP